

# Q-Bond

## Ultra High Bonding Adhesive



**Q Bond Ultra High Bond Adhesive bonds most non-porous materials in seconds.** The 2 part multi purpose adhesive when used in conjunction with filling powders provides a unique "instant weld" like bond. When used independently of filler powders it dries to a clear, permanent bond with exceptional strength.

### 3 simple steps



**1.**  
Clean Surfaces  
To Be Bonded



**2.**  
Sprinkle Q-Bond  
Powder Over  
The Surface  
To Be Repaired



**3.**  
Saturate Q-Bond  
Powder with  
Q-Bond  
Super Glue

### Instructions For Use

1. Slightly roughen the surface with an abrasive. Remove any paint and clean surfaces with Acetone for best results. Ensure surface is dry and free from grease, dust and other impediments.
2. If repairing a breakage, apply minimal Q Bond Ultra High Bond adhesive and clamp together firmly for a few seconds. Once bond is achieved, apply the reinforcing powder to the repair area. Once powder is in position, apply liberal amounts of Q Bond Ultra High Bond adhesive to the powder. Within a few seconds a visible chemical reaction occurs and the repair is complete. Additional reinforcing powder can be immediately applied using the same procedure.
3. If filling holes or large cracks, it may be necessary to use packaging tape or similar to cover the underside of the hole or crack to enable filling powder to be in position prior to applying the Q Bond Ultra High Bond adhesive to the reinforcing powder.
4. Sand or file repaired area as necessary.
5. Maximum strength achieved after 12 hours  
Clean up with acetone

Suitable for temperatures up to 180 degrees C.  
Pressure to 4 bar.

**Caution**  
Avoid breathing in vapours - use in a well ventilated area.  
Chemical reaction may burn skin. Bonds instantly to skin  
Store in a dark, cool place

### KITS

**QB2** - Kit Contains 2 x 10ml Q Bond Ultra Strong Adhesive,  
1 x Grey filling powders and 1 x Black filling powders

**QB3** - Kit Contains 6 x 10ml Q Bond Ultra Strong Adhesive,  
1 x Grey filling powders and 2 x Black filling powders

**QB4** - Contains 1 x 10ml Q Bond Ultra Strong Adhesive



**QB4**



**QB2**



**QB3**

### Ideal for

metals, ceramics, woods, most plastics - (not polyethylene or polypropylene), natural and synthetic rubbers and leathers. Not recommended for use on paper, plastics with an oily/waxy appearance; eg: polyethylene, polypropylene or Teflon. Will not permanently bond glass or materials containing a high alkaline content.

## **PRODUCT**

Q Bond Ultra High Bond Adhesive bonds most nonporous materials in seconds. The multi purpose adhesive when used in conjunction with filling powders provides a unique "instant weld" like bond. When used independently of filler powders, it dries to a clear, permanent bond with exceptional strength.

### **Ideal for**

metals, ceramics, woods, most plastics - (not polyethylene or polypropylene), natural and synthetic rubbers and leathers.

Not recommended on paper, plastics with an oily/waxy appearance; eg: polyethylene, polypropylene or Teflon. Will not permanently bond glass or materials containing a high alkaline content.

## **KITS**

QB2 Kit Contains 2 x 10ml Q Bond Ultra Strong Adhesive, 1 x Grey filling powders and 1 x Black filling powders

QB3 Kit Contains 6 x 10ml Q Bond Ultra Strong Adhesive, 1 x Grey filling powders and 2 x Black filling powders

QB4 Contains 1 x 10ml Q Bond Ultra Strong Adhesive

## **Instructions For Use**

1. Slightly roughen the surface with an abrasive. Remove any paint and clean surfaces with Acetone for best results. Ensure surface is dry and free from grease, dust and other impediments.
2. If repairing a breakage, apply minimal Q Bond Ultra High Bond adhesive and clamp together firmly for a few seconds. Once bond is achieved, apply the reinforcing powder to the repair area. Once powder is in position, apply liberal amounts of Q Bond Ultra High Bond adhesive to the powder. Within a few seconds a visible chemical reaction occurs and the repair is complete. Additional reinforcing powder can be immediately applied using the same procedure.
3. If filling holes or large cracks, it may be necessary to use packaging tape or similar to cover the underside of the hole or crack to enable filling powder to be in position prior to applying the Q Bond Ultra High Bond adhesive to the reinforcing powder.
4. Sand or file repaired area as necessary.
5. Maximum strength achieved after 12 hours
6. Clean up with acetone

Suitable for temperatures up to 180 degrees C.

### **Caution**

Avoid breathing in vapours - use in a well ventilated area.

Chemical reaction may burn skin. Bonds instantly to skin

Store in a dark, cool place

WATERPUMPS AND CASINGS



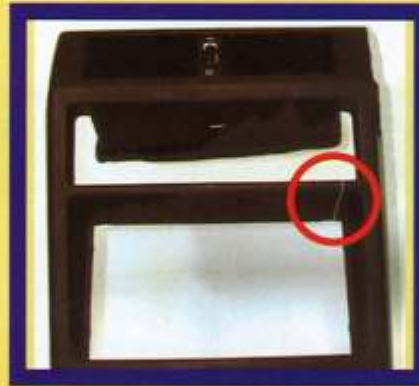
DOOR HANDLES



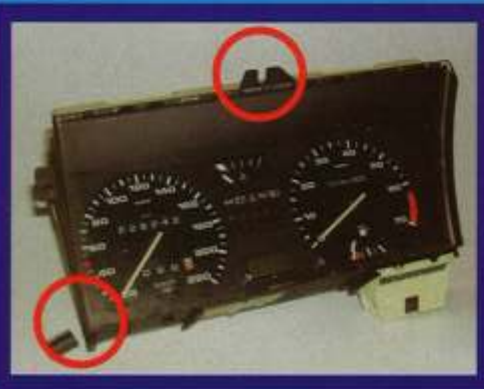
ELECTRONIC DEVICES AND COMPONENTS



CONSOLES AND DASH BOARDS



SPEEDOMETERS



GRILLS



# **Q-Bond**

**Quick Bonding, Ultra Strong  
Adhesives, Filling and  
Reinforcing Powders**

**for Repairing:**

**Radiators,**

**Bumpers,**

**Consuls,**

**Grills,**

**Clips and many more...**





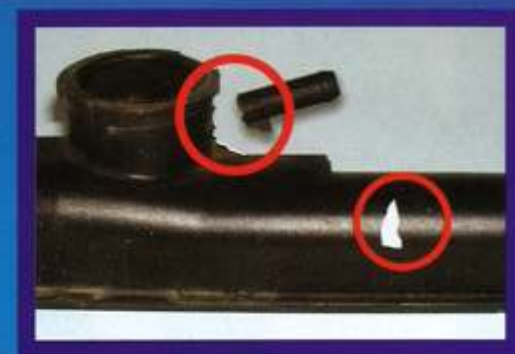
### FUSE BOXES



### MOTORCYCLE FAIRINGS



### RADIATORS AND WATERBOTTLES



Q-Bond is one of the finest products for repairing various types of breaks, cracks and other damages to a wide range of items.

Q-Bond has received various awards for outstanding quality and superior performance. For more serious repairs there is the two-part system with unique reinforcing and filling capabilities with which cracks, holes and gaps can be repaired to regain their original shape. These repairs can be grinded, filed, sanded and painted.

Repair these items and many more so that it is hardly visible. All this within a short period of time. Our experience is:

*"Once you try it, you will always stick by it."*

Use the Black Powder for:

- Radiators
- Grills
- Hand Tools
- Fairings
- Bumpers
- PVC Pipes
- Appliances
- Rear View Mirrors

Use The Grey Powder for:

- Tappet Covers
- Office Machines
- Casings
- Oil Leaks

### DISTRIBUTOR CAPS & ELECTRICAL COMPONENTS



### MOTORCYCLE SIDE PANELS



### LUGS AND CLIPS



### INDICATOR UNITS AND ACCESSORIES

