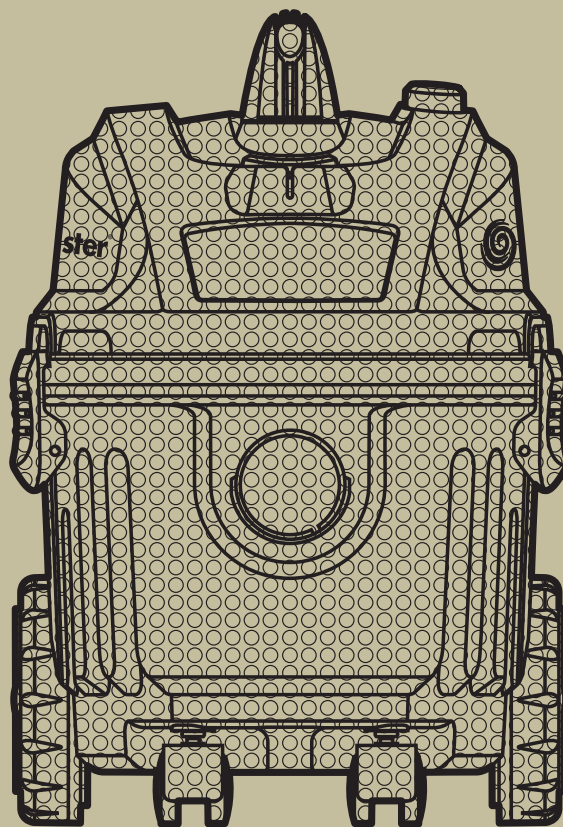




WET & DRY
VACUUM CLEANER

VMVF1515HJ



VMVF1515HJ / 1500W / 15L

T ABLE OF CONTENTS

SECTION	PAGE
Warranty _____	3
Safety Instructions and Warnings _____	3
Specifications _____	4
Unpacking and Checking Carton Contents _____	4
General Assembly Instructions _____	5
Switching On/Off _____	6
Dry Vacuum Operation _____	6
Wet Vacuum Operation _____	7
Maintenance _____	8
Installing & Cleaning Cartridge Filter _____	8
Installing & Cleaning Foam Sleeve Filter _____	9
Troubleshooting _____	9
Parts List - Exploded View _____	10

Thank you for purchasing this Vacmaster® wet/dry vacuum cleaner. Feel confident that with Vacmaster® you are obtaining a high quality product engineered for optimal performance. This vacuum is capable of picking up liquids and dry materials.

FOR YOUR SAFETY CAREFULLY READ AND UNDERSTAND ALL INSTRUCTIONS.

WARRANTY

Vacmaster® takes pride in producing a high quality, durable product. This Vacmaster® product carries a limited two (2) year warranty against defects in workmanship and materials from date of purchase under normal household use. If product is to be used for commercial, industrial or rental use, a 90 day limited warranty will apply. Warranty does not apply to defects due to direct or indirect abuse, negligence, misuse, accidents, repairs or alterations and lack of maintenance. Please keep your receipt as proof of purchase. This warranty gives you specific legal rights, and you may have other rights, which vary from state to state.

SAFETY INSTRUCTIONS & WARNINGS

- This appliance complies with the compulsory safety regulations for electric equipment. However, improper use can be harmful to people and property. Please read these operating instructions through carefully and completely before switching the appliance on. Keep the operating instructions, the guarantee certificate, the receipt, as well as the packaging and packaging material if at all possible.
- This appliance is designed solely for use in the private sector and for the designated purpose. The appliance is not suitable for commercial use. Don't use the appliance outdoors (unless it has been specifically designed for use outdoors). Don't subject the appliance to heat, direct sunshine or very high moisture (e.g. rain). Never immerse the appliance in liquids and be aware of sharp edges that may damage it.
- This wet/dry vacuum cleaner may only be used and kept in a private home.
- The appliance is designed to vacuum up materials that are not hazardous to your health and that are not flammable.
- Never hold the connectors in front of your face (Especially your eyes, ears, etc.) Never direct the nozzle towards persons or animals.
- Only use the appliance for its designated purpose-se. Any other types of use are at your own risk and are possibly dangerous.
- Other uses and unattended operation are not allowed.
- The manufacturer cannot be made responsible for damages that are caused by improper use or incorrect operation.
- Make sure that the correct dust bag has been inserted securely in its holder before

using the appliance. The wrong dust bag or incorrectly installed dust bags can cause damage to the appliance and cause the guarantee to become void.

- If the supply cord is damaged, it must be replaced by the manufacturer, its service agent or similarly qualified persons in order to avoid a hazard.
- Do not vacuum up ashes, hot coals or the like, large fragments of glass and sharp objects.
- Don't vacuum up any toner dust, which is used in printers and copiers for example, because it is electrically conductive. In addition, it is possible that it will not be completely filtered out by the filter system of the wet/dry vacuum cleaner and can be released into the air via the exhaust fan.
- Never vacuum asbestos or asbestos dust.
- Never vacuum flammable or poisonous liquids like petrol, oil, acids, or other volatile substances.
- Don't vacuum up liquids that are hotter than 60°C or any poisonous or flammable dusts.
- Never lay the appliance on its side. Pay particular attention to a horizontal position and adequate stability on stairs.
- Always unplug the appliance after use and before cleaning or changing the filters or accessories.
- Only trained specialists may make repairs on electric equipment. Improper repairs could result in considerable danger to the user.
- Do not store the appliance directly beside a hot oven or radiator.
- Children, disabled persons, and the aged are often not aware of the dangers that can result from handling electric appliances. The above-mentioned persons and untrained persons must never work with this electrical appliance.
- When cleaning or removing the appliance, al-ways switch it off. Pull the plug out of the receptacle, if you are not going to use the appliance for an extended period of time. Never pull on the cable to unplug the appliance, rather pull on the plug itself. Also, remove any special accessories from the appliance.
- Always keep the appliance clean. Don't use any solvents or cleaners that contain solvents for cleaning.
- Never leave the appliance switched on unit-tended. If you leave the work area, switch the appliance off or unplug it from the receptacle (don't pull the cord, but use the plug).
- In order to protect children from electric household appliances, make sure that the cable can't cause children to stumble and don't give children access to the appliance.
- Never use the appliance when you are under the influence of medication, alcohol or

drugs, if you are currently under medical care, or if you are tired.

- Check the appliance and the power cord regularly for any possible damage. Don't use damaged appliances.
- Don't try to repair the appliance yourself. Always use an authorized technician for repairs. Always have faulty power cords replaced immediately by the manufacturer or a qualified electrician. Use the same type of cable in order to prevent any danger of electric shock and injury.
- Only use original spare parts and accessories. None approved parts or third-party accessories may be a possible source of danger and cause the guarantee to become void.
- Check the float often.
- If you notice liquid leaking from your appliance, switch it off immediately and unplug it.
- Don't put the appliance in water. Make sure that water is not spilled on the appliance.
- When disposing of the wastewater, make sure that you observe any legal regulations.
- Only store the appliance in a safe and dry location-on outside the reach of children.
- Please also pay particular attention to the follow-wing "Special Safety Information".
- This appliance is not intended for use by persons (including children) with reduced physical, sensory or mental capabilities, or lack of experience and knowledge, unless they have been given supervision or instruction concerning use of the appliance by a person responsible for their safety.
- Children should be supervised to ensure that they do not play with the appliance.
- For additional protection: It is recommended that this vac can be used in conjunction with residual current device (RCD) with a rated residual current of 30mA or less.

SPECIAL SAFETY INFORMATION

- Never vacuum up hot ashes or pointed or sharp objects.
- Never use the appliance in damp rooms.
- Don't use the appliance without a dust bag (an exception is wet vacuuming). Make sure that the dust bag is inserted into the appliance correctly.
- When using the appliance, make sure that no hair, clothing, or members are drawn in.
- Keep the vacuum cleaner away from heat sources such as radiant heaters, ovens, and so on.

DISPOSAL INFORMATION

The appliance contains electric and electronic components and may not be disposed of as household garbage. The local and currently applicable legislation must be observed unconditionally.

SPECIFICATIONS

Motor:	240V-50Hz
Container:	15L
Watt:	1500W
Filter-Dry:	PET Cartridge Filter & Dust Bag
Filter-Wet:	Foam Sleeve Filter

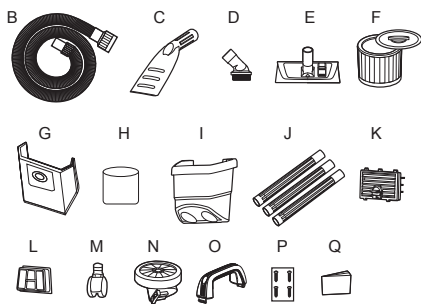
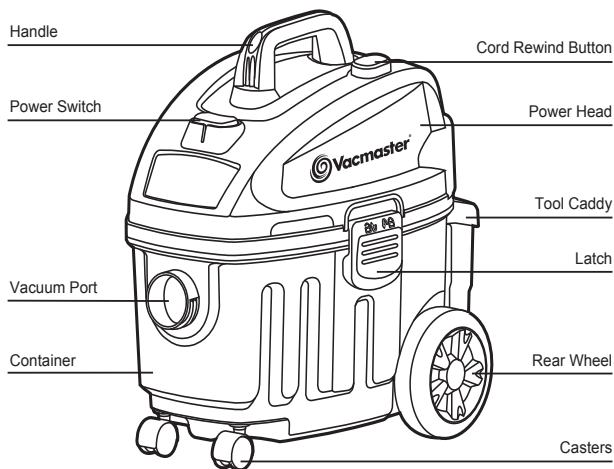
UNPACKING AND CHECKING CARTON CONTENTS

Remove entire contents of carton. Check each item against the carton contents list.

Carton Contents List

Key	Description	QTY
A	Vac Assembly.....	1
B	Hose.....	1
C	Car Nozzle.....	1
D	Round Dust Brush.....	1
E	Floor Combo Nozzle.....	1
F	Cartridge Filter.....	1
G	Dust Bag.....	1
H	Foam Sleeve Filter.....	1
I	Rear Caddy.....	1
J	Extension Wand.....	3
K	HEPA Filter Door.....	1
L	HEPA Filter.....	1
M	Casters.....	2
N	Rear Wheels.....	2
O	Handle.....	1

P	Bag with 4 Screws.....	1
Q	Operator's Manual.....	1



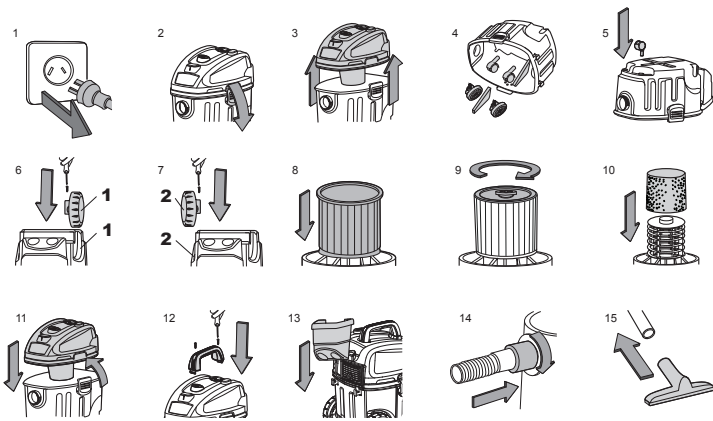
GENERAL ASSEMBLY INSTRUCTIONS

WARNING: DO NOT PLUG IN POWER CORD TO POWER OUTLET, MAKE SURE PLUG IS DISCONNECTED BEFORE ASSEMBLING THE WET/DRY VAC

UNPACKING YOUR WET/DRY VACUUM & GENERAL ASSEMBLY

UNPACKING YOUR WET/DRY VACUUM & GENERAL ASSEMBLY

1. Verify that the power cord is disconnected from the outlet. (fig. 2)
2. Undo the latches. (fig. 2)
3. Lift the power head off the container. (fig. 3)
4. Remove the contents from inside the container, make sure you have all contents as listed on page 5. (fig. 4)
5. Turn the container upside down and insert the two casters (2) into the slots on the front side of the container. Apply downward pressure until the casters snap into place. (fig. 5)
6. Slide the rear wheels into the slots making sure to match the wheel number to the corresponding number on the wheel slot and use screws to secure them. Do not over tighten the screw. (fig. 6 & 7)
7. Your vacuum comes ready for dry vacuum cleaning. If cartridge filter is not installed refer to page 8 for filter installation. (fig. 8 & 9)
8. For wet vacuum cleaning, install the supplied foam filter. (fig. 10) See page 9 for filter installation.
9. Place the power head back on the container, aligning the top section with the latches, and lock into place. (fig. 11)
10. Insert the handle into the slots located on the top of the power head and secure it with the screws provided. Do not over tighten the screw. (fig. 12)
11. Hang the tool caddy to the hooks on the rear of the vacuum. (fig. 13)
12. Secure the large end of the hose onto the vacuum port on the container and screw into place. (fig. 14)
13. Choose the desired accessories and extension wands and push onto the hose. (fig. 15)



D RY-VACUUM OPERATION

WARNING: BE SURE TO READ, UNDERSTAND, AND APPLY INFORMATION, ENTITLED 'SAFETY INSTRUCTIONS & WARNINGS'. DO NOT VACUUM IN AREAS WITH FLAMMABLE GASES, VAPORS, OR EXPLOSIVE DUSTS IN THE AIR. FLAMMABLE GASES OR VAPORS INCLUDE BUT ARE NOT LIMITED TO; LIGHTER FLUID, SOLVENT TYPE CLEANERS, OIL-BASE PAINTS, GASOLINE, ALCOHOL OR AEROSOL SPRAYS. EXPLOSIVE DUSTS INCLUDE BUT ARE NOT LIMITED TO; COAL, MAGNESIUM, GRAIN OR GUN POWDER. TO REDUCE THE RISK OF HEALTH HAZARDS FROM VAPORS OR DUST, DO NOT VACUUM TOXIC MATERIALS.

1. Verify that the power cord is disconnected from the outlet. (fig.1)
2. In order to prepare your vacuum for dry vacuuming, verify that the cartridge filter is securely mounted. Make sure the filter is pushed in until it stops against the power head. (fig. 2) (Your Wet/Dry Vac comes with the cartridge filter pre-installed, if not see page 9 for installation instructions.)
3. Place filter retainer on top of cartridge filter and tighten by turning the retainer handle clockwise. (fig. 3)
4. Optional, for improved dust filtering, fit collection dust bag flange onto the inlet

stub, taking care not to damage the bag. (fig. 4)

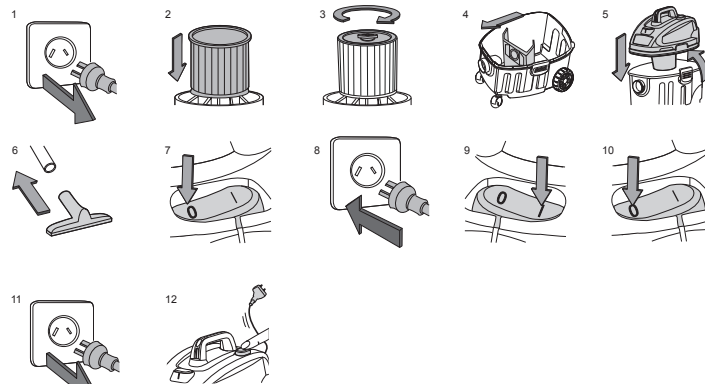
5. Place the power head back on the container, aligning the top section with the latches, and lock into place. (fig. 5)

OPERATING INSTRUCTIONS: DRY VACUUMING

6. Insert the locking end of the hose into the vacuum port on the power head and screw in place. Push the desired extension wands or attachments onto the free end of the hose. (fig. 6)
7. Verify that the switch is in the 'O' OFF position before plugging the power cord into the outlet. (fig. 7 & 8)
8. Turn the motor on by flipping the switch to the 'I' ON position. (fig. 9)
9. Once you have completed vacuuming, flip the switch to the 'O' OFF position and unplug the power cord from the outlet. (fig. 10 & 11)
10. To rewind the cord, hold on to the plug and press the cord rewind button. Do not allow plug to whip when rewinding. (fig. 12)

O = OFF I = ON

DO NOT USE THE CARTRIDGE FILTER FOR LIQUID VACUUMING.



WET-VACUUM OPERATION

WARNING: BE SURE TO READ, UNDERSTAND, AND APPLY INFORMATION, ENTITLED 'SAFETY INSTRUCTIONS & WARNINGS'. DO NOT VACUUM IN AREAS WITH FLAMMABLE GASES, VAPORS, OR EXPLOSIVE DUSTS IN THE AIR. FLAMMABLE GASES OR VAPORS INCLUDE BUT ARE NOT LIMITED TO; LIGHTER FLUID, SOLVENT TYPE CLEANERS, OIL-BASE PAINTS, GASOLINE, ALCOHOL OR AEROSOL SPRAYS. EXPLOSIVE DUSTS INCLUDE BUT ARE NOT LIMITED TO; COAL, MAGNESIUM, GRAIN OR GUN POWDER. TO REDUCE THE RISK OF HEALTH HAZARDS FROM VAPORS OR DUST, DO NOT VACUUM TOXIC MATERIALS.

WARNING: DO NOT PLUG IN POWER CORD TO POWER OUTLET, MAKE SURE PLUG IS DISCONNECTED BEFORE ASSEMBLING THE WET/DRY VAC

1. Verify that the power cord is disconnected from the outlet. Verify that the container is clean and free of dust and dirt. (fig. 1)
2. Remove cartridge filter and the dust collection bag, then carefully install the foam sleeve filter over the filter cage and place the power head back on the container. (fig. 2) See filter installing instructions on page 10.

DO NOT USE THE CARTRIDGE FILTER FOR LIQUID VACUUMING.

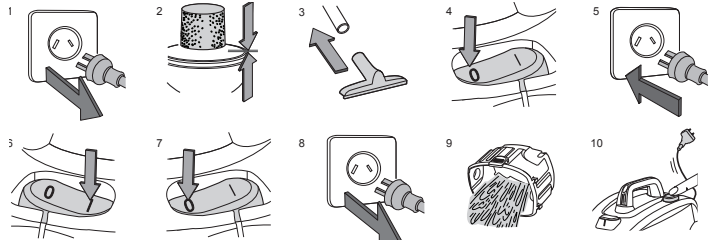
OPERATING INSTRUCTIONS – WET VACUUMING

3. Fit the desired extension wands or nozzle to the vacuum hose. (fig. 3)
4. Verify that the switch is in the 'O' OFF position before plugging the power cord into the outlet. (fig. 4 & 5)
5. Turn the motor on by flipping the switch to the 'I' ON position. (fig. 6)
6. After use, flip the switch to the 'O' OFF position and unplug the power cord from the outlet. (fig. 7 & 8)
7. Empty the container into a suitable receptacle or drain. (fig. 9)
8. To rewind the cord, hold on to the plug and press the cord rewind button. Do not allow plug to whip when rewinding. (fig. 10)

IMPORTANT! When vacuuming large quantities of liquids, do not immerse the nozzle completely in the liquid; leave a gap at the tip of the nozzle opening to allow air inflow. The machine is fitted with a float valve that stops the suction

action when the container reaches its maximum capacity. You will notice an increase in motor speed. When this happens, turn off the machine, disconnect from power supply, and drain the liquid into a suitable receptacle or drain. To continue vacuuming, refill the container with power head. After wet vacuuming, turn the machine off and remove plug from power supply. Empty the container, clean and dry the inside and outside before storage.

REMEMBER! The foam filter must be removed after wet vacuuming, and a cartridge filter must be installed before dry vacuuming again.



MAINTENANCE

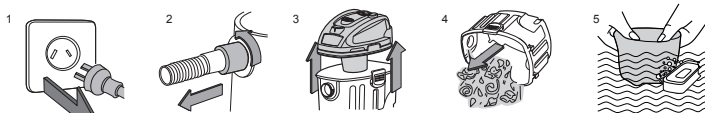
1. Verify that the power cord is disconnected from the outlet. (fig.1)
2. Disconnect the hose from the vacuum. (fig. 2)
3. Undo the latches and remove the power head from the container. (fig. 3)
4. Clear all dirt or debris from the container and hose. (fig. 4)
5. Clean the foam filter by washing it with water and mild soap. (fig. 5)
6. Check the hose, attachments, and power cord to verify that they have not been damaged.

IMPORTANT! Clean or change the cartridge filter regularly for best performance. ALWAYS USE CARTRIDGE FILTER FOR DRY VACUUMING. If the machine is used with out the cartridge filter, the motor will burn out and the warranty will be voided. Always keep spare filters on-hand.

NOTICE! The filters included are made of high quality materials designed to stop small dust particles. The cartridge filter should be used for dry pick-up

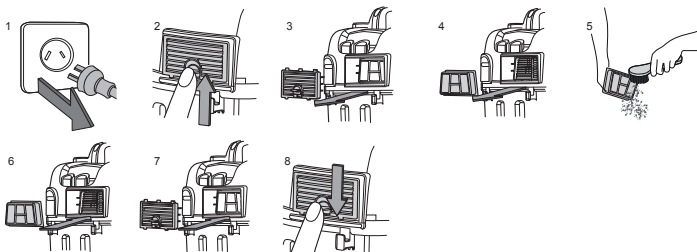
only. A dry cartridge filter is necessary to pick up dust. If the cartridge filter is wet, it will clog quickly and be very difficult to clean. Handle the filter carefully when removing it for cleaning and replacing it. Check the filters for tears or small holes, a small hole can let dust pass through and out of the cleaner. Do not use a filter with holes or tears in it; replace it immediately.

WARNING! ALWAYS DISCONNECT THE PLUG FROM THE POWER OUTLET BEFORE REMOVING THE POWER HEAD FROM THE CONTAINER.



Installing and Cleaning HEPA Filter

1. Verify that the power cord is disconnected from the outlet. (fig.1)
2. Unlock the filter door by lifting the lock tab UP to the unlocked position and pull the door out. (fig. 2 & 3)
3. Remove the HEPA filter cartridge from the vacuum. (fig.4)
4. Clean filter by brushing dirt off. For optimal performance a new filter is recommended. (fig.5)
5. Install the cleaned or new filter into place. (fig. 6)
6. Insert the filter door tabs into the upper slots and lock the filter door into place. (fig. 7 & 8)



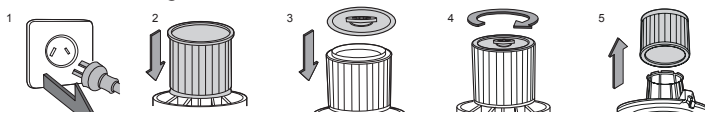
INSTALLING & CLEANING FILTERS

Installing Cartridge Filter

1. Verify that the power cord is disconnected from the outlet. (fig. 1)
2. Remove power head and place in upside down position.
3. Install the cartridge filter over the filter cage and carefully push filter in until it stops against the power head. (fig.2)
4. Place filter retainer on top of cartridge filter and tighten down by turning retainer clockwise. (fig. 3 & 4)

Removing and Cleaning Cartridge Filter

1. Unlock and remove the filter retainer by turning retainer handle counter clockwise.
2. Carefully hold and pull the cartridge filter up for removal. (fig.5)
3. Clean the cartridge filter by gently tapping or brushing dirt off. Cleaning should not be done indoors in living areas. For optimal performance a new filter is recommended.
4. Install cleaned or new filter into place as instructed above in steps 1 - 3 of Installing Cartridge Filter.
5. Wet filters should be removed and allowed to air dry for 24 hours before installing onto the filter cage.



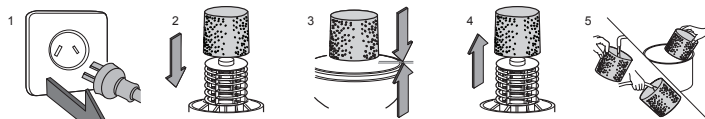
INSTALLING & CLEANING FOAM SLEEVE FILTER

Installing Foam Sleeve Filter

1. Verify that the power cord is disconnected from the outlet. (fig. 1)
2. Remove power head and place in upside down position. Follow instructions to remove cartridge filter.
3. Carefully slide foam sleeve filter down over the filter cage making sure the whole cage is covered. (fig. 2 & 3)
4. Replace the power head on to the container.

Cleaning Foam Sleeve Filter

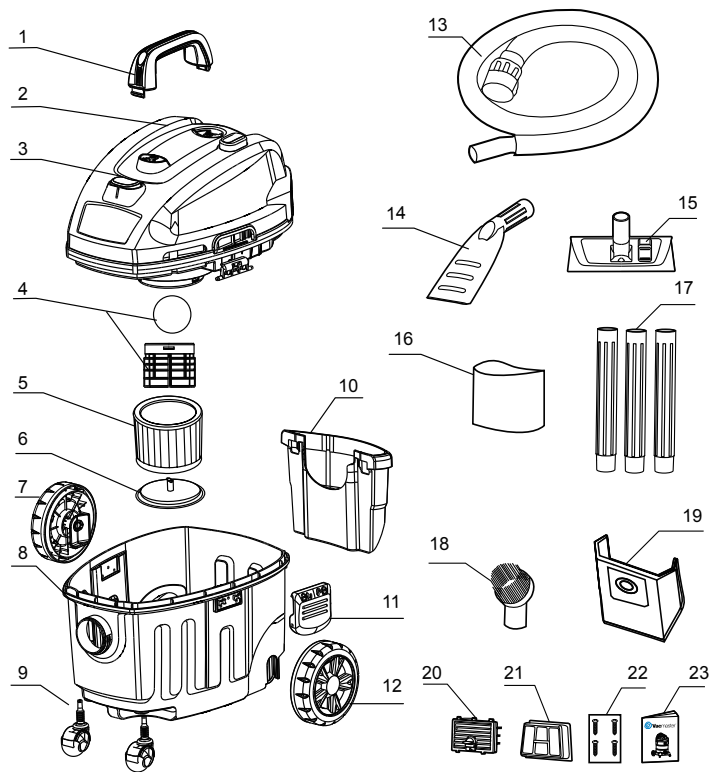
1. With the removed power head in the upside down position, carefully remove foam sleeve filter. (fig. 4)
2. Use a mild soap and water solution to wash foam sleeve filter and rinse with clean water. (fig. 5)
3. Allow filter to air dry before installing and using again.



TROUBLESHOOTING

Symptom	Possible Causes	Corrective Action
Vacuum will not operate	1) No power supply.	1) Check power supply – cord, breakers, fuses.
	2) Faulty power cord.	2) Unplug and check the power cord. If damaged, have it repaired by a professional.
	3) Container full.	3) Empty container.
Dust comes out from motor cover.	1) The cartridge filter is missing or damaged.	1) Attach or replace cartridge filter.
Reduced efficiency and motor/speed vibration.	1) There is a blockage in the nozzle, hose, or the container inlet. The cartridge filter is clogged by fine dust.	1) Check nozzle, hose and container inlets for blockage. Take off the filter and clean it. Or install a new cartridge filter.

PARTS LIST -EXPLODED VIEW



VMVF1515HJ Manual Parts List

Key Number	Drawing Number	Description	Quantity
1	GD41BX.40.01	Handle	1
2	VH60P1.16.00	Power Head Assembly	1
3	WODQ10.01.12	Power Switch	1
4	VH60P1.17.00	Float & Filter Cage	1
5	FV9543.03.03	Cartridge Filter	1
6	FV9543.03.20	Filter Retainer	1
7	TVQTGL.17.00	Left Rear Wheel	1
8	VH60P1.20.01	Container	1
9	TVQTJL.08.00	Caster	2
10	FV9241.04.01	Tool Caddy	1
11	TVQTDK.11.00	Latch Assembly	2
12	TVQTGL.18.00	Right Rear Wheel	1
13	FV8804.02.00	Hose	1
14	FV8775.02.01	Car Nozzle	1
15	FV8721.05.00	Floor Combo Nozzle	1
16	FV9502.06.00	Foam Sleeve	1
17	FV8903.01.01	Extension Wands	3
18	FV8773.01.00	Round Brush	1
19	FV9641.03.00	Dust Bag	1
20	VH60P1.11.00	HEPA Filter Door	1
21	VE01PW.10.30	HEPA Rated Filter	1
22	BOA2ZZ.39.01	Screws	4
23		Operator's Manual	1

MADE IN P. R. C.

VMVF1515HJ