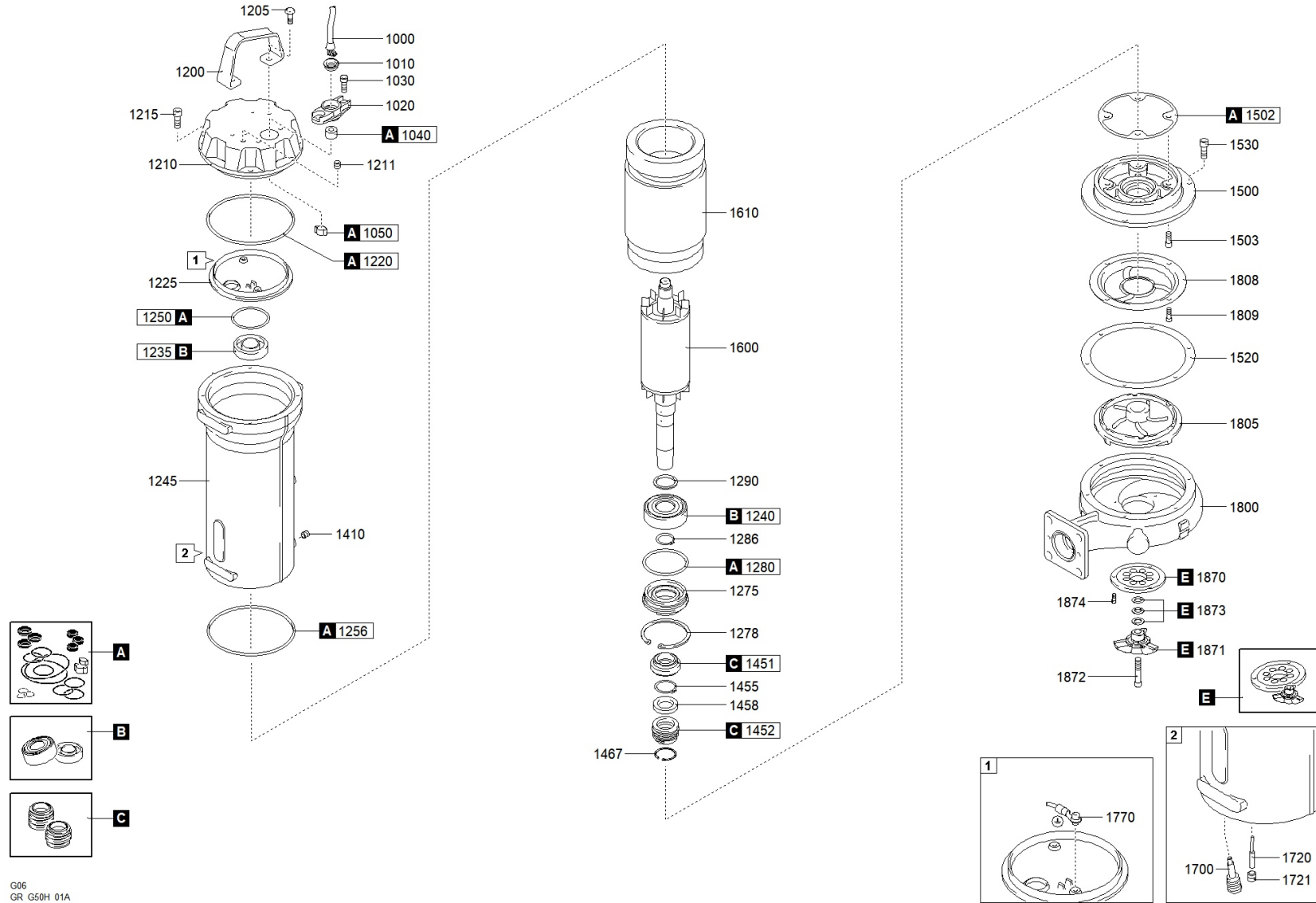




better together

1467.200 - GRG 400/2/G50H D0ET5 NGTSB51040N00EX



G06
GR G50H 01A



better together



1467.200 - GRG 400/2/G50H D0ET5 NGTSB51040N00EX

		Code	Description		Q.ty	Price (€)
A		601052001	GASKETS KIT	806125	1	
C		602052091	MECHANICAL SEALS KIT	806127	1	
E		603052001	CUTTING SYSTEM KIT	806115	1	
B		604052001	BEARINGS KIT	806131	1	
1000		25020340151000001	CAVO POTENZA	802306	1	
1010		235467216820	RING NUT [POWER CABLE]	711016 OR 802074	1	
1020		235423622710	CABLE GLAND [POWER CABLE]	802276	1	
1030		270830810203200000	SCREW - CABLE GLAND [POWER CABLE]	802093 OR 802095	2	
1040		235672721990	RUBBER GASKET [POWER CABLE]		1	
1050		2732001400000	COLLAR CLAMP [POWER CABLE]	802081	1	
1200		235232426544	HANDLE		1	
1205		270830810201200000	SCREW [HANDLE >> COVER]	802319	2	
1210		2321170EX28490	COVER		1	
1211		270139510104000003	CAP [TIGHTNESS TEST]		1	
1215		270830810203200000	SCREW [COVER >> MOTOR CASE]	802093 OR 802095	2	
1220		271770139035000000	GASKET [COVER >> UPPER BEARING HOLDER]		1	
1225		230617025857	UPPER BEARING HOLDER		1	
1235		2729062030200000	UPPER BEARING	711360 OR 802083	1	
1240		2729063060200000	LOWER BEARING	710970 OR 802082	1	
1245		2310170EX28574	MOTOR CASE		1	
1250		271770040952620000	GASKET [UPPER BEARING]		1	
1256		271770120018000000	GASKET [MOTOR CASE >> PUMP PLATE]		1	
1275		23915074032027877	LOWER BEARING FLANGE		1	
1278		270320750200000	SEEGER [LOWER BEARING FLANGE]		1	
1280		271770068026000000	GASKET [LOWER BEARING FLANGE]		1	
1286		270330300100000	SEEGER [LOWER BEARING >> LOWER BEARING FLANGE]	802102	1	
1290		270220300422500000	DISTANCE RING [LOWER BEARING]	802098	1	
1410		270139510104000003	CAP [OIL CHAMBER]		1	
1451		230000010250000000	1st MECHANICAL SEAL		1	
1452		230001810250000000	2nd MECHANICAL SEAL		1	
1455		270330250100000	SEEGER [1st MECHANICAL SEAL >> 2nd MECHANICAL SEAL]	802101	1	
1458		270533762109027892	DISTANCE RING [1st MECHANICAL SEAL >> 2nd MECHANICAL SEAL]		1	
1467		270320620200000	SEEGER [2nd MECHANICAL SEAL]		1	
1500		236212002527852	PUMP PLATE		1	
1502		2750911526543	GASKET [PUMP PLATE]		1	
1503		270830810203200000	SCREW [PUMP PLATE >> MOTOR CASE]	802093 OR 802095	2	
1520		2750920022190	GASKET [PUMP PLATE >> PUMP BODY]	710949	2	
1530		270830810203200000	SCREW [PUMP PLATE >> PUMP BODY]	802093 OR 802095	2	

1600	2302350126EX26570	SHAFT WITH ROTOR		1
1610	231101263021000000	WOUND STATOR		1
1700	25072200000000	HUMIDITY PROBE [OIL CHAMBER]		1
1770	2500000001800072	GROUND CABLE CONNECTOR		1
1800	21251520020123437	PUMP BODY	710967	1
1805	21411GR165NN28013	IMPELLER	806119	1
1808	23913196060027230	DISTANCE RING [PUMP PLATE >> IMPELLER]		1
1809	270830810123200000	SCREW [DISTANCE RING >> PUMP PLATE]	802093 OR 802095	4
1870	211731027185	CUTTING DISK		1
1871	211630824028	CHOPPER KNIFE	710901	1
1872	270830810703200000	LOCKING CHOPPER KNIFE		1
1873	270620120180200000	WASHER [CHOPPER KNIFE]	711051	2
1874	270830610143200000	SCREW [CUTTING DISK >> PUMP BODY]	806113	3